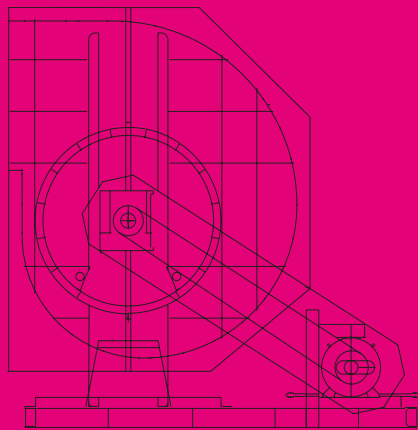


Smoke extraction fans

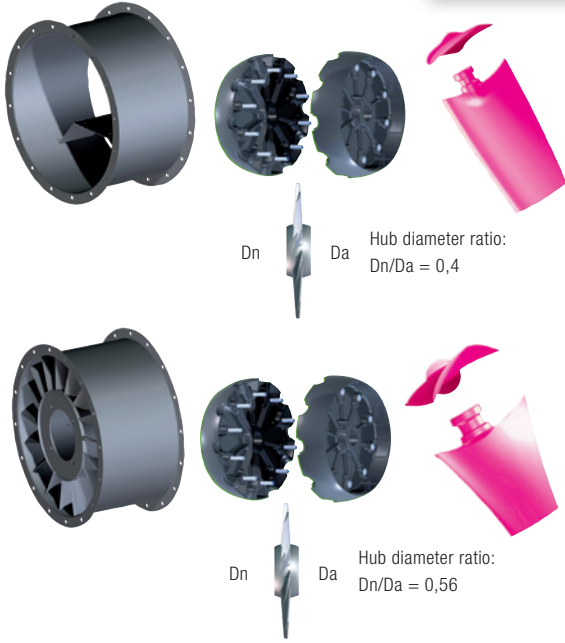


POLLRICH DLK®
FAN FACTORIES



- Heavy-duty industrial centrifugal fans
- Compact industrial centrifugal fans
- Axial fans
- Plug fans
- Smoke extraction fans

6 product lines of **axial** smoke extraction fans for the temperature classes F300, F400 and F600,



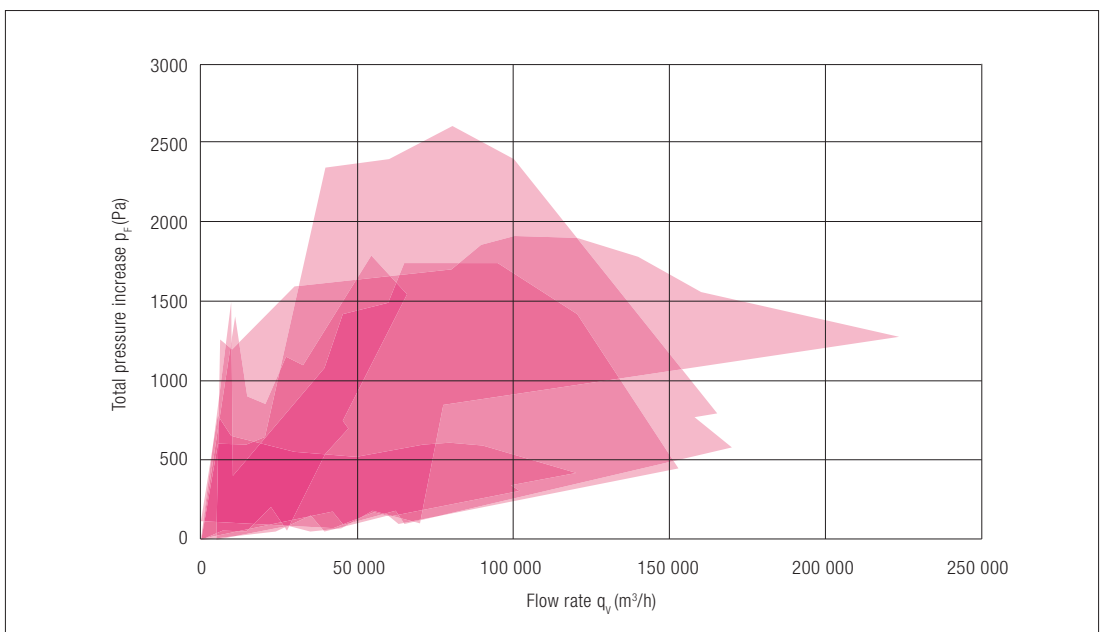
**Medium pressure
F300 and F400**

**Medium and high pressure fans including guide vanes
F300, F400 and F600**

Sizes: DN 250 - 1600
 $q_v = 1000 - 220\,000 \text{ m}^3/\text{h}$
 $p_F = 50 - 2600 \text{ Pa}$
 $P_e = 0,25 - 90 \text{ kW}$

Axial fans direct driven with or without inlet resp. discharge guide vanes.

All units certified acc to **EN 12101-3**



Performance range ($\rho = 1,2 \text{ kg/m}^3$) of our fan lines SACM, SANM, and SAVM

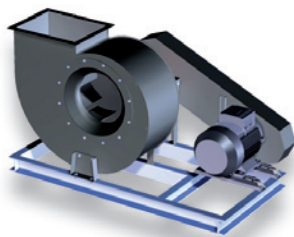
3 centrifugal smoke extraction fan types for temperature class F600,

**Centrifugal fan, belt driven,
Rugged scroll casing, available
for different handings**

$q_v = 1000 - 95\,000 \text{ m}^3/\text{h}$

$p_F = 300 - 3000 \text{ Pa}$

$P_e = 0,25 - 75 \text{ kW}$



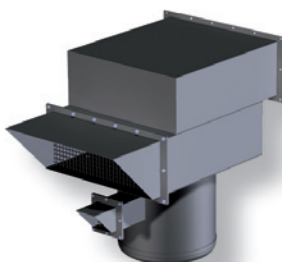
**Single inlet casing
for belt drive
F600**

**Centrifugal fan, wall mounted,
direct driven**

$q_v = 1000 - 80\,000 \text{ m}^3/\text{h}$

$p_F = 200 - 2800 \text{ Pa}$

$P_e = 0,25 - 55 \text{ kW}$



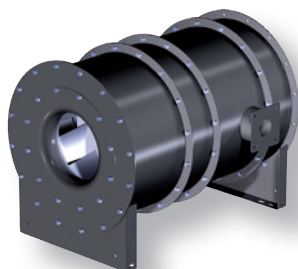
**For installation
on a wall
F600**

**Centrifugal duct fan, direct
driven with pressed on flanges
for duct connection**

$q_v = 1000 - 110\,000 \text{ m}^3/\text{h}$

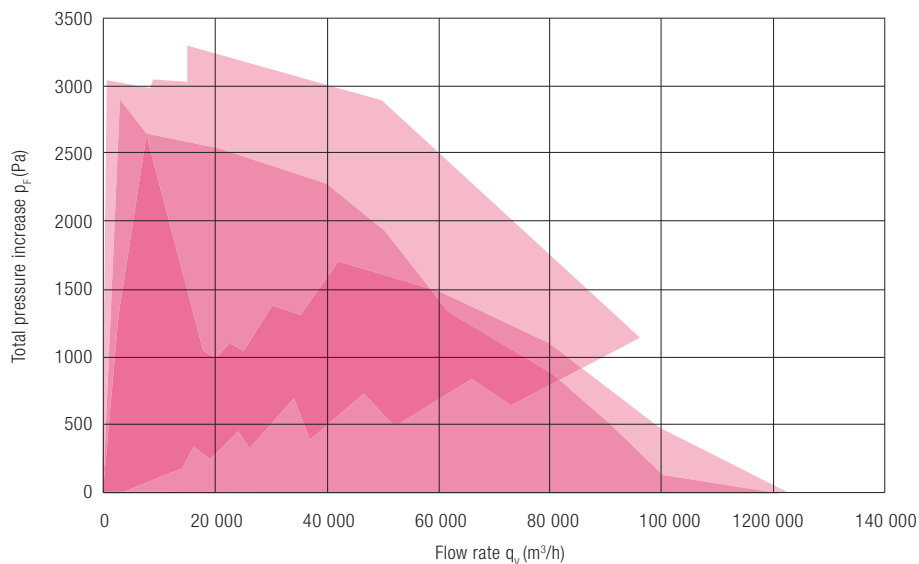
$p_F = 100 - 2600 \text{ Pa}$

$P_e = 0,25 - 55 \text{ kW}$



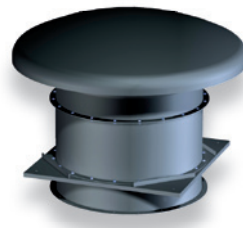
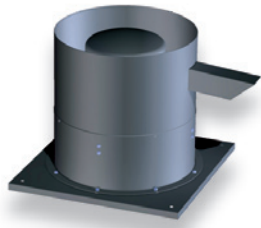
**Duct fan with
centrifugal impeller
F600**

All units certified acc to
EN 12101-3



Performance range ($\rho = 1,2 \text{ kg}/\text{m}^3$) of our fan lines SRER, SREM, and SRNM

smoke extraction **roof fans** - axial F300 – centrifugal F400 and F600.



Axial and centrifugal fans with comprehensive system accessory allow reliable all-in-one solutions for your safety.

Each smoke extraction roof fan is certified acc. to **EN 12101-3** by the Technical University of Munich.

Field of application: For ventilation/smoke extraction of production and storage facilities, shopping centres, airports, car parks, public baths, etc.

Centrifugal roof fans, direct driven, vertical discharge, for exhaust air.

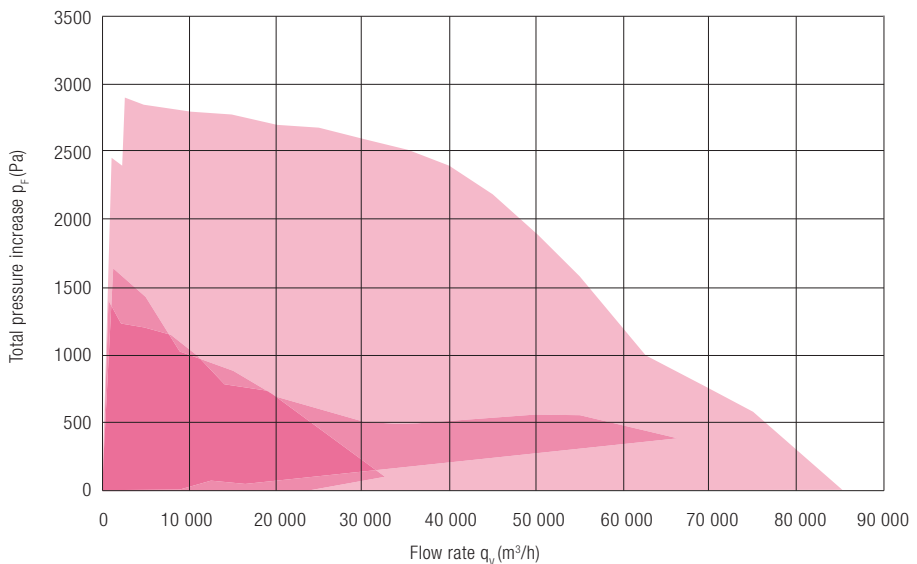
Low pressure axial roof fan, direct driven, for intake and exhaust air.

Sizes:
DN 315 - 1250

Sizes:
DN 315 - 1250

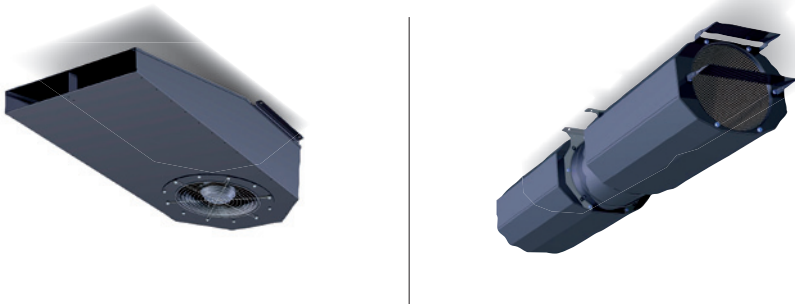
Performance range:
 $q_v = 200 - 80\,000 \text{ m}^3/\text{h}$
 $p_F = 140 - 2800 \text{ Pa}$
 $P_e = 0,25 - 55 \text{ kW}$

Performance range:
 $q_v = 500 - 85\,000 \text{ m}^3/\text{h}$
 $p_F = 100 - 1100 \text{ Pa}$
 $P_e = 0,25 - 22 \text{ kW}$



Performance range ($\rho = 1,2 \text{ kg}/\text{m}^3$) of our fan lines SRDM, SADM

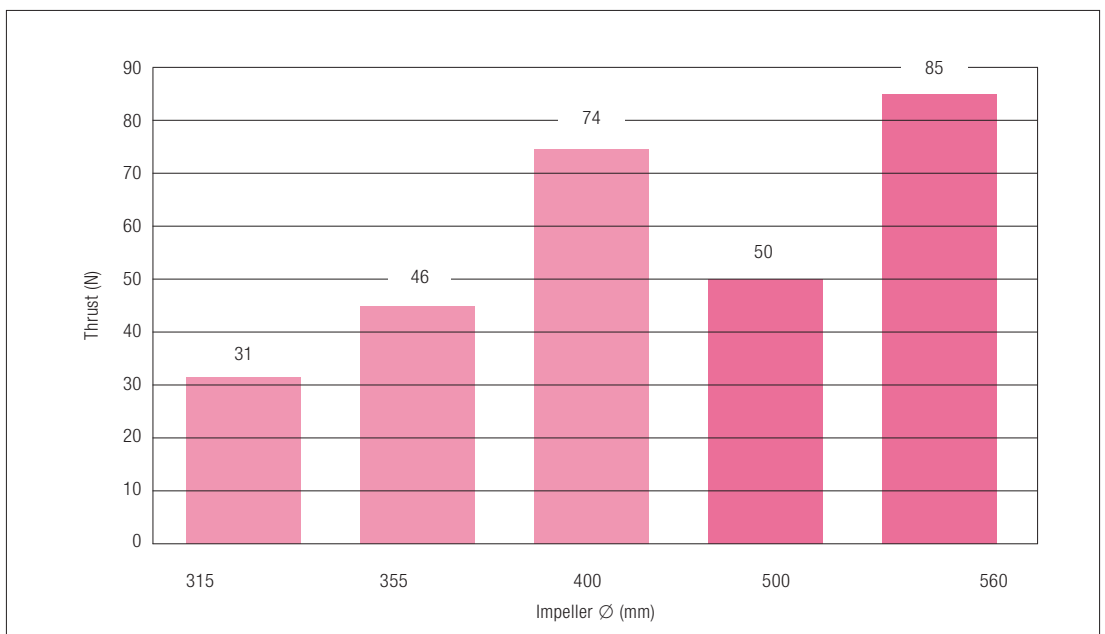
Car park Jetfans - axial F300 and F400 – centrifugal F300.



All jetfans can be used for both **smoke extraction and plain CO-management** as well as for a combination of both. Comprehensive system accessory allows you reliable all-in-one solutions for divers installation requirements and safety.

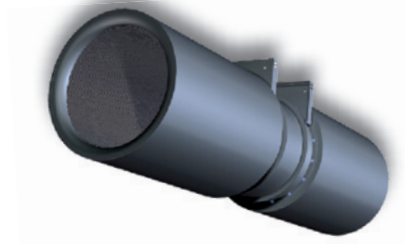
- Centrifugal:** This fan product line offers most recent Jetfan-technology with a particular flat design for reduced ceiling clearance requirements.
- highest thrust at **minimal height** and **maximum efficiency** by CFD and FEM optimisation.
 - Easiest handling and installation by complete **aluminium** design
 - **Weight savings** up to 50% in comparison to conventional solutions
 - Ideal solutions due to various product options: **2** different **sizes**, high performance centrifugal impeller, single or two speed motor
 - Temperatur class F300
 - CE-certified acc. **EN 12101-3**
 - DIBt (German Institute for Construction) certificate

- Axial:** This fan product line combines functionality with modern design and sets new standards in axial Jetfan-technology.
- highest thrust at **minimal height** and **maximum efficiency** by CFD and FEM optimisation.
 - Easiest handling and installation by complete **aluminium** design
 - **Weight savings** up to 50% in comparison to conventional solutions
 - Can be installed any place of the world because of compatibility to **50Hz and 60Hz** power supply.
 - **“Whisper-mode”** operation due to high performance polygone silencer
 - Ideal solutions due to various product options: **3** different **sizes**, unidirectional or fully reversible impellers, single or two speed motor
 - Temperatur class F300 or F400
 - CE-certified acc. **EN 12101-3**
 - DIBt (German Institute for Construction) certificate



■ Performance range of our axial fan line SAJM ■ Performance range of our centrifugal fan line SRJM

Tunnel Jetfans - axial F400.



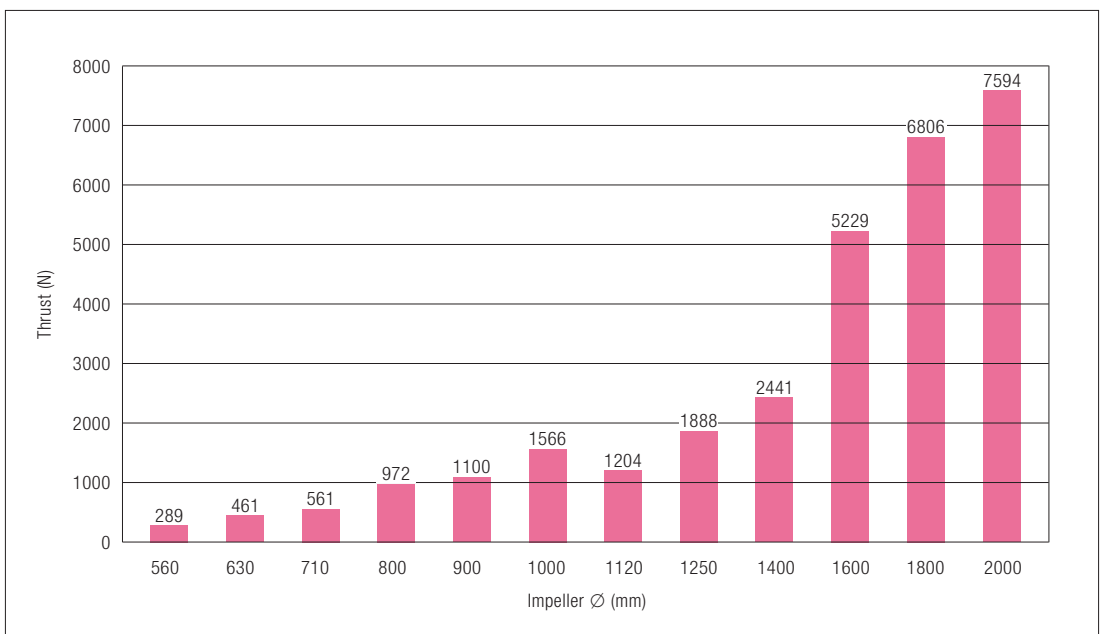
The fan **range for Road- and Underground Tunnels as well as for Metro Stations.**

The fan product line for road- and underground tunnels as well as for metro stations: These fans can be used in any tunnel ventilation system, for ventilation as well as for smoke extraction.

The complete product line is engineered and tested for the operation in emergency situations. By the use of high quality materials such as **stainless steel**, we prevent the impact of aggressive mediums in road tunnel applications. In addition, we achieve remarkably **higher** peripheral speeds (**thrust** performance) by the use of welded impellers.

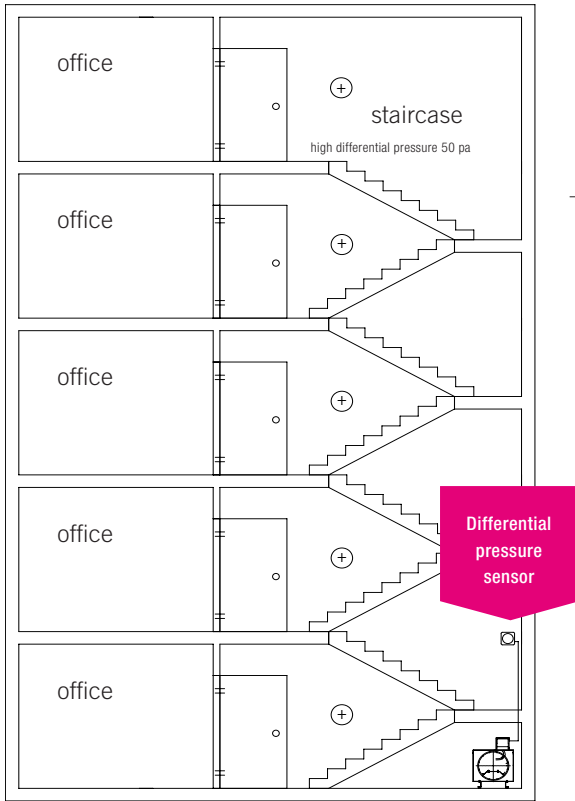
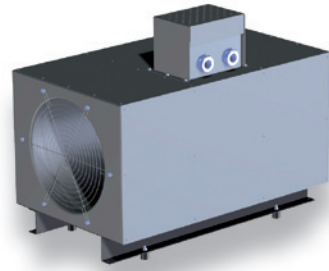
The great flexibility in their application range is provided by the possibility of the **reverse mode** operation and by the wide range of available sizes (DN 560 - 1600). We can actually offer impeller sizes up to DN 2000 as project related design solution.

Certified acc. to **EN 12101-3**



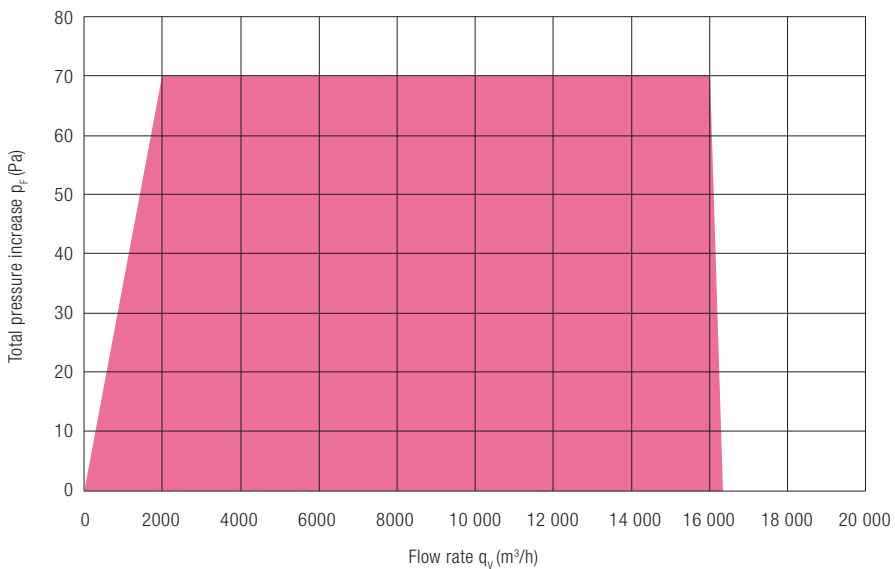
Performance data tunnel jettfans of our range SATM

Smoke displacement-system to safeguard escape routes.



The fan type AAR is a smoke displacement-system which has been developed especially as ventilation system to keep escape and rescue routes smoke free.

With this system, it is guaranteed that in the **event of a fire** always a higher pressure in the staircase is maintained than in the adjoining corridors and rooms. This **overpressure** ensures that no smoke gas will penetrate into the escape routes.



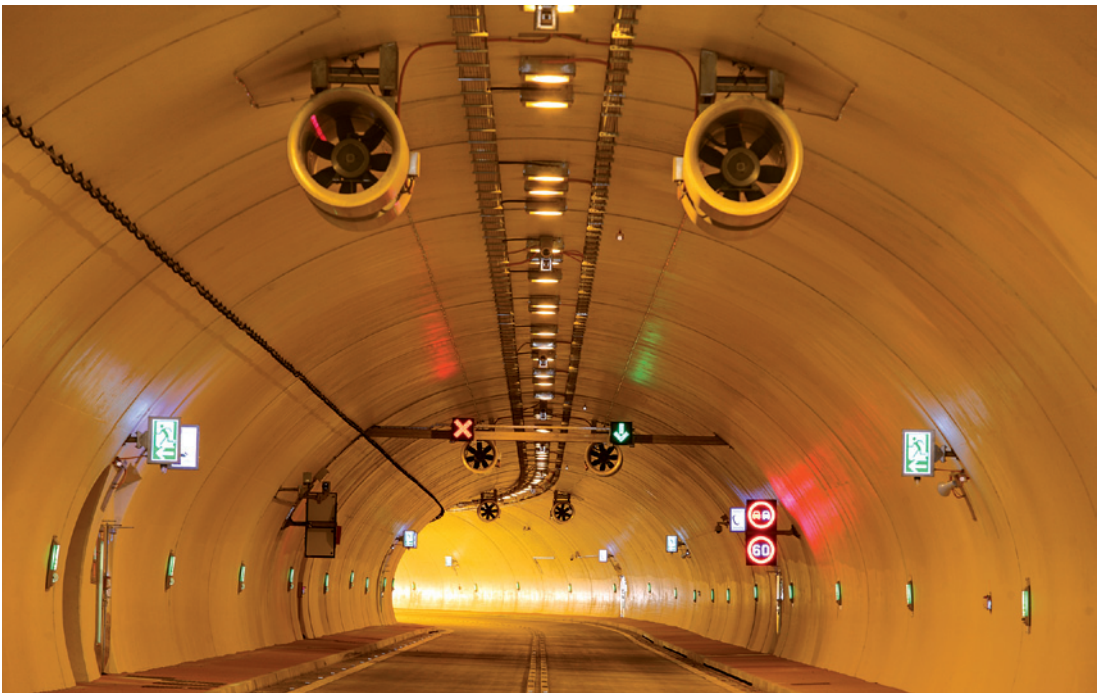
References



Shopping Centre “Elbepark” in Germany

Belt driven centrifugal smoke extraction fan with thermal insulation

Diameter: 1000 mm
Flow rate: 45 000 m³/h
Pressure increase: 1000 Pa
Temperature: 600 °C
Motor rating: 30 kW



Road tunnel “Laliki” in Poland

12 jet fans with stainless steel silencers

Thrust: bis 810 N
Diameter: 800 mm
Temperature class: F400
Motor rating: 22 kW

Service days last 24 hours

The modern quality management methods of our after sales and customer support centre ensure you quality standard, reliability and efficiency. Since fans belong to a great extend to the process determining factors of your business, we offer our service and assistance to you regardless of your fan supplier anywhere in the world within the shortest possible time if assistance is requested.

24h SERVICE for fan units — worldwide.

Service-hotline:

fon +49(0)2161-968 184
fax +49(0)2161-968 307
service@pollrich.com

Our service-team is available for you around-the-clock

- Technical advice
- Assembly
- Commissioning
- Performance tests

- Noise and vibration measurements
- Inspection
- Preventative maintenance
- Maintenance and repair
- Electronic balancing
- System optimisation

Headquarters:

[DE] Pollrich Ventilatoren GmbH

Neusser Straße 172
D-41065 Mönchengladbach
fon +49(0) 2161-968 - 0
fax +49(0) 2161-968 - 300
info@pollrich.com

[DE] DLK Ventilatoren GmbH

Ziegeleistraße 18
D-74214 Schöntal-Berlichingen
fon +49(0) 7943-9102 - 0
fax +49(0) 7943-9102 - 10
info@dlk.com

Your local support:

[FR] Pollrich France

17, Chemin des Boeufs, Za Les Bosquets
FR-95540 Mery sur Oise
fon +33(0) 130 360 920
fax +33(0) 130 360 966
simon-pollrich@wanadoo.fr

[CN] Nantong Dart-pollrich fan CO.,Ltd

88 Tongsheng Road,
Nantong Economic & Technology Development Zone,
CN-Nantong, Jiangsu, China
Post code: 226010
fon +86(0) 513-85554 411
fax +86(0) 513-85544 316
ntfan@dart-pollrich.com

[NL] Tunnel Fans

P.O. box 114, NL-3910 AC Rhenen
Utrechtsestraatweg 206
NL-3911 TX Rhenen
fon +31(0) 318470 043
info@tunnelfans.nl

Further partners worldwide:

>see www.pollrichdlk.com

POLLRICH[®]DLK[®]
FAN FACTORIES

